



COMPANY OVERVIEW

REAL-TIME SUBSURFACE INTELLIGENCE SOLUTIONS

www.qteq.com.au

Oct-2020, Rev. A

Economic Innovations

QTEQ IN THE GEORESOURCES INDUSTRY

Qteq Pty Ltd

Who are we?

Qteq is an environmental technology service provider at the forefront of automating value creation for the energy, minerals and water industries

We develop, re-purpose and acquire technologies that deliver fit-for-purpose solutions, at an appropriate price point.

Our strength originates in the reliable performance of a diverse portfolio of wired and Q-Fi™ wireless subsurface measurement, monitoring and sampling systems.

Our reputation stems from our relentless focus on safety, operational excellence and product quality.

Our success is based on building strong and long term customer relationships and the value of the real-time actionable data we provide.

Our ability to **measure** and **monitor** the subsurface enables our clients to **manage** geosource assets and **mitigate** technical, commercial and environmental risks.

QTEQ VISION

TO AUTOMATE ENVIRONMENTAL STEWARDSHIP
THROUGH SMART TECHNOLOGIES

QTEQ PURPOSE

WE CHARACTERISE, DIGITALISE, AUTOMATE &
VISUALISE RESOURCE DEVELOPMENT TO
ENHANCE OUR CLIENTS' SOCIAL VALUE

Qteq

Image below:
Wireline field operations



Our Solutions

Which industries do we operate in?

We provide our suite of products and services to numerous sectors across the energy, minerals and water industries.

Within each sector we work for diverse end-users spanning different parts of the life cycle value chain.

We also engage state regulators with oversight for environmental stewardship.

To ensure we remain relevant to our clients, we focus on delivering the latest sensor technologies, ruggedized to provide superior operational reliability, complemented by world-class deployment service excellence.



AECOM

arrowenergy
go further

bhpbilliton

NSW
GOVERNMENT

origin

Santos

Rio Tinto



QGC

"TO LEAD CHANGE IN THE GEORESOURCES INDUSTRY THROUGH TECHNICAL AND COMMERCIAL INNOVATIONS THAT PROTECT THE ENVIRONMENT AND ENHANCE OUR CLIENTS' SOCIAL LICENCE TO OPERATE."

SIMON ASHTON (QTEQ EXECUTIVE CHAIRMAN)

HSEQ - Safety

Company pledge

Qteq's primary obligation is the health and safety of our employees, subcontractors and clients. Our team's excellent safety record results from fastidious attention to safety in all work areas and from continually assessing and improving our QHSE programs and initiatives. Qteq is dedicated to achieving 'GOAL ZERO' through one safe day at a time. We are also committed to reducing our environmental footprint through effective resource consumption and efficient recycling policies.

Our relentless focus on safety exists because our leadership team is firmly committed to a policy that enables all work activities to be carried out safely, and with all possible measures taken to remove, or at least reduce, risks to the health, safety and welfare of our employees and the communities in which we work.

Why industry initiatives?

Qteq is an active member of Safer Together, a not-for-profit, member-led organisation of oil and gas industry E&P operating companies and contracted partner companies. Safer Together's goal is to build a strong and consistent safety culture across the industry. Qteq participates in both the working group and Senior Leadership Group.



Qteq's Key People

140+ Years' experience

Our CxO's have extensive senior technical and/or management experience in international setting, and each is a recognised specialist in their field of expertise.

Qteq's commitment to its people is demonstrated by our strong regionally focused recruitment policy in combination with internal training and development.



SIMON ASHTON
EXECUTIVE CHAIRMAN



EWAN MELDRUM
CHIEF EXECUTIVE OFFICER



QUENTIN MORGAN
CHIEF TECHNOLOGY OFFICER



DAMIAN ELEMENT
CHIEF FINANCIAL OFFICER

Responsibility

Community engagement

We acknowledge and embrace our Corporate Social Responsibility by ensuring that not only our clients and suppliers receive the service and response they deserve, but also by giving back to the communities we operate in.

To support local communities, and personal mental and physical health, we encourage our employees to take part in fundraiser and sporting events by helping them raise money for their chosen charity.

Employees have in the past raised significant funds through the company for local, national and international organisations.



Since early 2018 we have been the major sponsor of Toowoomba Brothers Netball club, a relationship we intend to continue for many years to come.

Also, a number of our employees take part in the yearly Ride to Conquer Cancer, continuing to raise significant funds.



OUR PRODUCTS & SERVICES

Monitoring Systems

Subsurface development

Qteq Monitoring Systems is able to provide a wide variety of electronic and fibre optic sensors that can be deployed subsurface to enable clients successfully manage their production optimization strategies.

These sensors can be combined and freely configured into a variety of architectures.

These systems can be installed in boreholes and wells using several different installation techniques, with measurements transmitted to surface by a variety of wired and wireless telemetry technologies.

Monitoring systems are supplied from our Toowoomba CoE with significant inventory of critical equipment held in Toowoomba and other strategic locations. This ensures we can cover not only contracted work, but any immediate call out work, providing clients comfort that their development and work over schedules will not be constrained by availability of subsurface monitoring systems.

Sensor Types Architectures Telemetry Options Data Management



- End-point pressure and temperature sensors
- Multi-drop pressure and temperature sensors
- Fibre optic distributed temperature and acoustic sensors
- Casing, tubing, micro-coil and cable deployment methods
- Wireless electromagnetic telemetry
- Wireless fluid level monitoring
- Surface data acquisition and wireless telemetry skids
- Software as a Service (SaaS) real-time data visualisation
- Data as a Service (DaaS) historical data storage
- Multi-zone completions equipment
- Hazardous area service capabilities



ENERGY

ENVIRONMENTAL

MINERALS

WATER

Monitoring Systems

Subsurface environmental

Qteq Monitoring Systems also provides a range of electronic and fibre optic sensors to monitor CO₂ injection profiles, plume migration and plume containment at carbon capture and sequestration (CCS) sites.

Qteq also provide sensors to aid hydrogeologists study the distribution and movement of groundwater in soil and sedimentary rocks.

This includes fibre optic sensors that can detect and track subsurface compaction in real-time, arising from excessive withdrawal of groundwater or other georesources.

Qteq has also developed a proprietary low-flow groundwater sampling system that eliminates need for a submersible pump and can be set up to 2,000 m below ground.

The Q-Tube AquiSample system comprises a single BHA that is set at the sample intake depth.

It is suspended on continuous twin-tube, or tube-in-tube, umbilical from surface. The elegantly simply operating principle removes the need to impose an upper limit on sampling depth, with sampling time dictated by sample intake depth, relative to the standing fluid level.

Sensor Types, Architectures, Data Management, Sampling Systems

- End-point pressure and temperature sensors
- Multi-drop pressure and temperature sensors
- Fibre optic distributed temperature and acoustic sensors
- Fibre optic distributed strain sensors
- Casing, tubing, micro-coil and cable deployment methods
- Surface data acquisition and wireless telemetry skids
- Software as a Service (SaaS) real-time data visualisation
- Data as a Service (DaaS) historical data storage
- Low-flow sampling systems



Measurement Systems

Wireline Logging & Intervention

Qteq Measurement Systems provides a broad portfolio of open hole wireline logging tools to characterise fossil energy, mineral and groundwater resources.

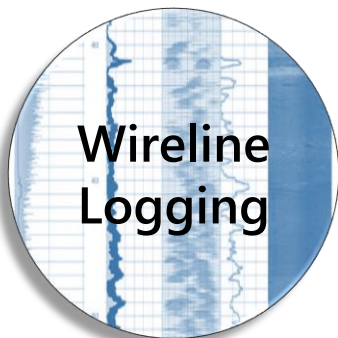
These tools are deployed using a variety of purpose built, highly efficient wireline units, that are custom designed and fabricated in house to meet client and regulatory requirements.

Qteq also provides a wide range of wireline cased hole integrity, intervention and remediation services.

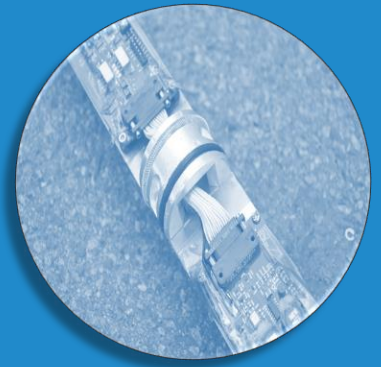
Wireline services are provided from our Toowoomba CoE and a number of satellite operations bases, ensuring logging campaigns can be mobilised quickly to client locations across Queensland and neighbouring states, and to ensure adequate support of field operations.

Our key strength is our people, with our operations bases equipped and staffed by teams of specialists able to conduct full wireline unit and tool servicing, calibration and maintenance

Open and Cased Hole Logging



- Gyro Survey and Borehole Trajectory Measurements
- Total and Spectral GR Measurements
- Neutron and Density Measurements
- Resistivity Measurements (Laterolog and Induction)
- Magnetic Susceptibility
- Borehole Magnetic Resonance Measurements
- Spectroscopy Measurements
- Acoustic and Optical Imaging Logs
- Cased hole evaluation
- Perforations Plugs and Packers
- Wellbore Integrity
- Downhole Cameras
- Well Decommissioning services



PROVIDING A FULL SUITE OF
WIRELINE LOGGING TOOLS
AND SERVICES TO THE
GEORESOURCES &
ENVIRONMENTAL
INDUSTRIES

Geotechnical and Geomechanical Logging

Our team of geotechnical wireline operators provides high quality geotechnical logging services to mining and civil companies in Australia.

Geophysical and Petrophysical Logging

Qteq has a team of experienced petrophysicists who can help our clients choose the right tool for their geophysical and petrophysical logging programs covering a wide range of technologies.

Borehole Imaging and Downhole Cameras

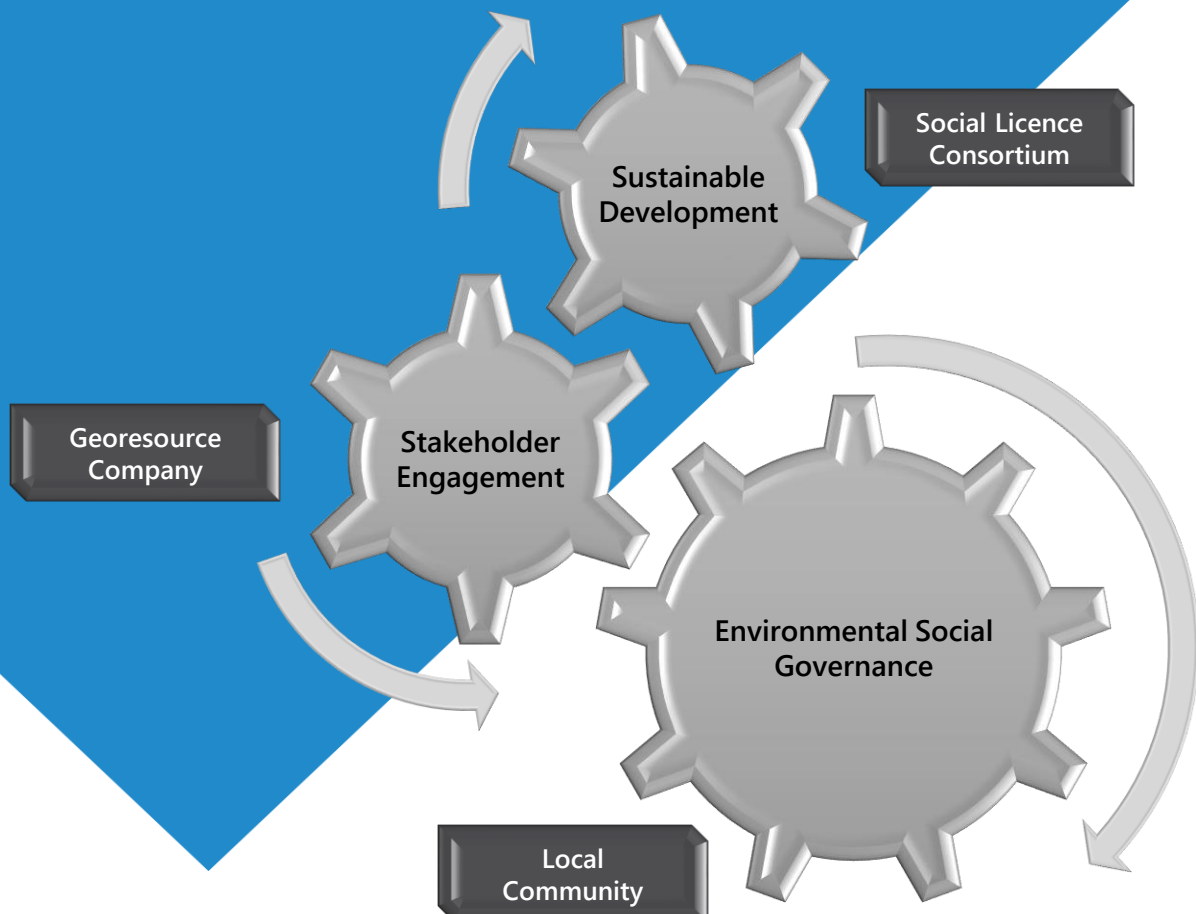
We deliver Borehole Imaging services to major mining companies across Australia.

Cased Hole Services

Provision of our full range of Cased Hole services is not limited to merely the Oil and Gas industry. We also operate in the Groundwater and Carbon Sequestration sectors.

Groundwater

As a leading provider of groundwater wireline services, our experienced team can assist with all elements of groundwater planning and evaluation services.



QTEQ PTY LTD

www.qteq.com.au

Registered Office (QHQ)

Brisbane

Suite 4, Level 3, 340 Adelaide Street
Brisbane, 4000 QLD, Australia
T +61 (0)7 3834 9100

sales@qteq.com.au
info@qteq.com.au
careers@qteq.com.au

Linked in

The logo for Qteq, featuring a stylized 'Q' followed by 'teq' in a lowercase, sans-serif font.

QTEQ OPERATIONS:

Centre of Excellence (CoE)

Toowoomba

179 Stephen Street
Harristown, 4350 QLD, Australia
T +61 (0)7 4659 0537

EXCLUSIVE PARTNERSHIP:



Geo Pressure Systems
Downhole electronic gauges

Economic Innovations