



**Qteq**

# COMPANY OVERVIEW

REAL-TIME SUBSURFACE, ENVIRONMENTAL AND  
NATURAL DISASTER INTELLIGENCE

[www.qteq.com](http://www.qteq.com)

Apr-2021, Rev. 1

MEASURE | MONITOR | MANAGE | MITIGATE

# Qteq in the market place

## Qteq Pty Ltd

### Who are we?

Qteq aims to improve resource exploration and production outcomes, enable clients to meet social and environmental obligations, and safeguard communities and assets from the impacts of severe weather events.

Founded on the premise that data-driven process and workflow automation drive value creation for the energy, minerals and water industries, we also understand the importance of providing situational awareness to automate environmental stewardship and safeguard communities from environmental impacts.

That is why we focus on engineering Smart sensors to characterise, digitalise & visualise resource development and environmental footprint.

Qteq also provides Smart Sentinel systems to safeguard assets and communities prone to extreme weather events.

We deliver practical, reliable and affordable solutions, spanning the entire value chain, to resource industries, environmental regulators and communities.

With our 4M 'strategy' we aim to **measure** (characterise) and **monitor** (track changes to) the surface and subsurface domains, derive and **manage** actionable intelligence and **mitigate** impact of extreme weather events.

*Image:  
Disaster & Alert Mitigation  
Sentinel System*



## QTEQ VISION

TO AUTOMATE ENVIRONMENTAL STEWARDSHIP AND SAFEGUARD COMMUNITIES AND ECOSYSTEMS THROUGH SMART TECHNOLOGIES.

# Our Solutions

## Which industries do we operate in?

We provide our suite of products and services to numerous sectors across the energy, minerals and water industries, and to help mitigate the impact of natural disasters.

Within each sector we work for diverse end-users spanning different parts of the life cycle value chain.

We also engage state regulators with oversight for environmental stewardship.

To ensure we remain relevant to our clients, we focus on delivering the latest sensor technologies, ruggedised to provide superior operational reliability, complemented by world-class deployment service excellence.



Department of  
Natural Resources,  
Mines and Energy

RioTinto



Santos

## ENVIRONMENTAL STEWARDSHIP

QTEQ PLAYS A VITAL ROLE IN THE RESPONSIBLE DEVELOPMENT OF ENERGY, MINERALS AND WATER RESOURCES, MINIMISING EXTRACTIVE ENVIRONMENTAL IMPACTS, AND SAFEGUARDING COMMUNITIES FROM NATURAL DISASTERS.



## HSEQ - Safety

### Company pledge

Qteq's primary obligation is the health and safety of our employees, subcontractors and clients. Our team's excellent safety record results from fastidious attention to safety in all work areas and from continually assessing and improving our QHSE programs and initiatives.

Qteq is dedicated to achieving 'GOAL ZERO' through one safe day at a time. We are also committed to reducing our environmental footprint through effective resource consumption and efficient recycling policies.

Our relentless focus on safety exists because our leadership team is firmly committed to a policy that enables all work activities to be carried out safely, and with all possible measures taken to remove, or at least reduce, risks to the health, safety and welfare of our employees and the communities in which we work.

### Why industry initiatives?

Qteq is an active member of Safer Together, a not-for-profit, member-led organisation of oil and gas industry E&P operating companies and contracted partner companies. Safer Together's goal is to build a strong and consistent safety culture across the industry. Qteq participates in both the working group and Senior Leadership Group.



## Qteq's Key People

### 140+ Years' experience

Our CxO's have extensive senior technical and/or management experience in international setting, and each is a recognised specialist in their field of expertise.

Qteq's commitment to its people is demonstrated by our strong regionally focused recruitment policy in combination with internal training and development.



**SIMON ASHTON**  
EXECUTIVE CHAIRMAN



**EWAN MELDRUM**  
CHIEF EXECUTIVE OFFICER



**QUENTIN MORGAN**  
CHIEF TECHNOLOGY OFFICER



**DAMIAN ELEMENT**  
CHIEF FINANCIAL OFFICER

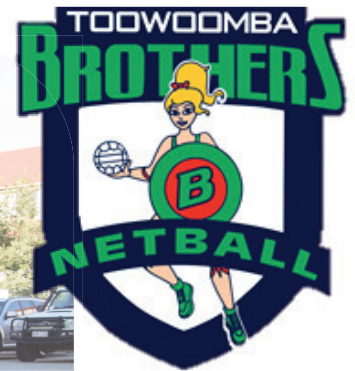
# Responsibility

## Community engagement

We acknowledge and embrace our Environmental, Social and Corporate Governance (ESG) responsibilities by ensuring that not only our clients and suppliers receive the service and response they deserve, but also by giving back to the communities we operate in, and safeguarding the environment in which we work.

To support local communities, and personal mental and physical health, we encourage our employees to take part in fundraiser and sporting events by helping them raise money for their chosen charity.

Employees have in the past raised significant funds through the company for local, national and international organisations.



Since early 2018 we have been the major sponsor of Toowoomba Brothers Netball club, a relationship we intend to continue for many years to come.

Also, a number of our employees take part in the yearly Ride to Conquer Cancer, continuing to raise significant funds.



# Our Products & Services

## Reservoir Monitoring Subsurface

Qteq can provide a wide variety of electronic and fibre optic sensors to monitor and optimise development and production of oil and gas.

These sensors can be combined and freely configured into a variety of architectures.

The systems can be installed in boreholes and wells using several different installation techniques, with measurements transmitted to surface by a variety of wired and wireless telemetry technologies.

Monitoring systems are supplied from our Toowoomba CoE with significant inventory of critical equipment held in Toowoomba and at other strategic locations. This ensures we can cover not only contracted work, but any immediate call out work, providing clients comfort that their development and work over schedules will not be constrained by availability of subsurface monitoring systems.

### Sensor Types, Architectures, Telemetry Options, Data Management



- End-point pressure and temperature sensors
- Multi-drop pressure and temperature sensors
- Fibre optic distributed temperature and acoustic sensors
- Casing, tubing, micro-coil and cable deployment methods
- Wireless electromagnetic telemetry
- Wireless fluid level monitoring
- Surface data acquisition and wireless telemetry skids
- Software as a Service (SaaS) real-time data visualisation
- Data as a Service (DaaS) historical data storage
- Multi-zone completions equipment
- Hazardous area service capabilities

DISASTERS  
ENERGY  
ENVIRONMENTAL  
MINERALS  
WATER



# Environmental Monitoring

## Surface & Subsurface

Qteq also provides a range of electronic and fibre optic sensors to monitor CO2 injection profiles, plume migration and plume containment at carbon capture and sequestration (CCS) sites.

The complete portfolio also encompasses supply of rain gauges, water flow meters, water quality meters, surface and subsurface water level gauges, water sampling systems and fibre optic compaction monitoring systems to aid hydrogeologists study the distribution, movement and extraction of surface water and groundwater.

Qteq has also developed a proprietary low flow groundwater sampling system that eliminates the need to impose an upper limit on sampling depth or depth below the standing water level.

The Q-Tube AquiSample system comprises a single BHA that is suspended at the sample intake depth on tubing, with both portable and permanently installed deployment methods available.

Qteq also supplies remote self-powered Smart Sentinel systems that provide real-time actionable data on surface water conditions, soil properties, groundwater parameters and meteorological variations

### Sensor Types, Architectures, Data Management, Sampling Systems

- End-point pressure and temperature sensors
- Multi-drop pressure and temperature sensors
- Fibre optic distributed temperature and acoustic sensors
- Fibre optic distributed strain sensors
- Casing, tubing, micro-coil and cable deployment methods
- Surface data acquisition and wireless telemetry skids
- Software as a Service (SaaS) real-time data visualisation
- Data as a Service (DaaS) historical data storage
- Low-flow sampling systems



**Environment,  
Social &  
Corporate  
Governance**



# Wireline Logging & Intervention

## Open Hole and Cased Hole

Qteq Wireline Logging & Intervention provides a broad portfolio of open hole logging tools and cased hole integrity, intervention and remediation services.

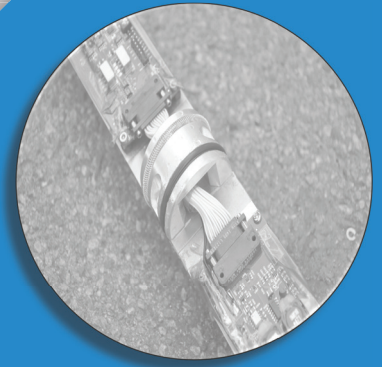
These tools are deployed using a variety of purpose built wireline units, custom designed and fabricated in house to meet client and regulatory requirements.

Wireline services are provided from our Toowoomba CoE and a number of satellite operations bases. This ensures logging campaigns can be mobilised quickly to client locations across Queensland and neighbouring states, and to ensure adequate support of field operations.

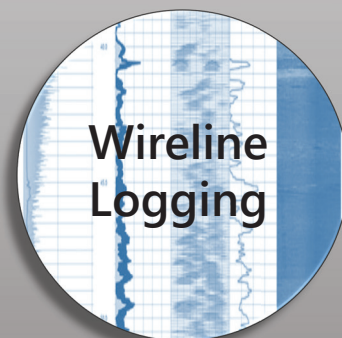
Our key strength is our people, with our operations bases equipped and staffed by teams of specialists able to service, calibrate, maintain and operate all wireline tools and units.

### Open and Cased Hole Logging

- Formation Density
- Neutron Porosity
- Total and Spectral GR Measurements
- Resistivity Measurements (Laterolog and Induction)
- Micro-resistivity, (Micro-spherically Focused and Microlog)
- Borehole Magnetic Resonance Measurements
- Magnetic Susceptibility
- Induced Polarisation
- Dipmeter
- Acoustic and Optical Imaging Logs
- Borehole Trajectory and Gyro Survey
- Production Logging
- Fluid Sampling
- Cement Evaluation
- Wellbore Imaging and Integrity
- Downhole Cameras
- Perforations
- Plugs and Packers Setting
- Pipe Recovery and Stuck Pipe Services



PROVIDING A FULL SUITE  
OF **WIRELINE LOGGING**  
TOOLS AND SERVICES TO  
THE GEORESOURCES &  
ENVIRONMENTAL  
INDUSTRIES





## Geotechnical and Geomechanical Logging

Our team of geotechnical wireline operators provides high quality geotechnical logging services to mining and civil companies in Australia.

## Geophysical and Petrophysical Logging

Qteq has a team of experienced petrophysicists who can help our clients choose the right logging tools for their geophysical and petrophysical acquisition programs and measurement objectives.

## Borehole Imaging and Downhole Cameras

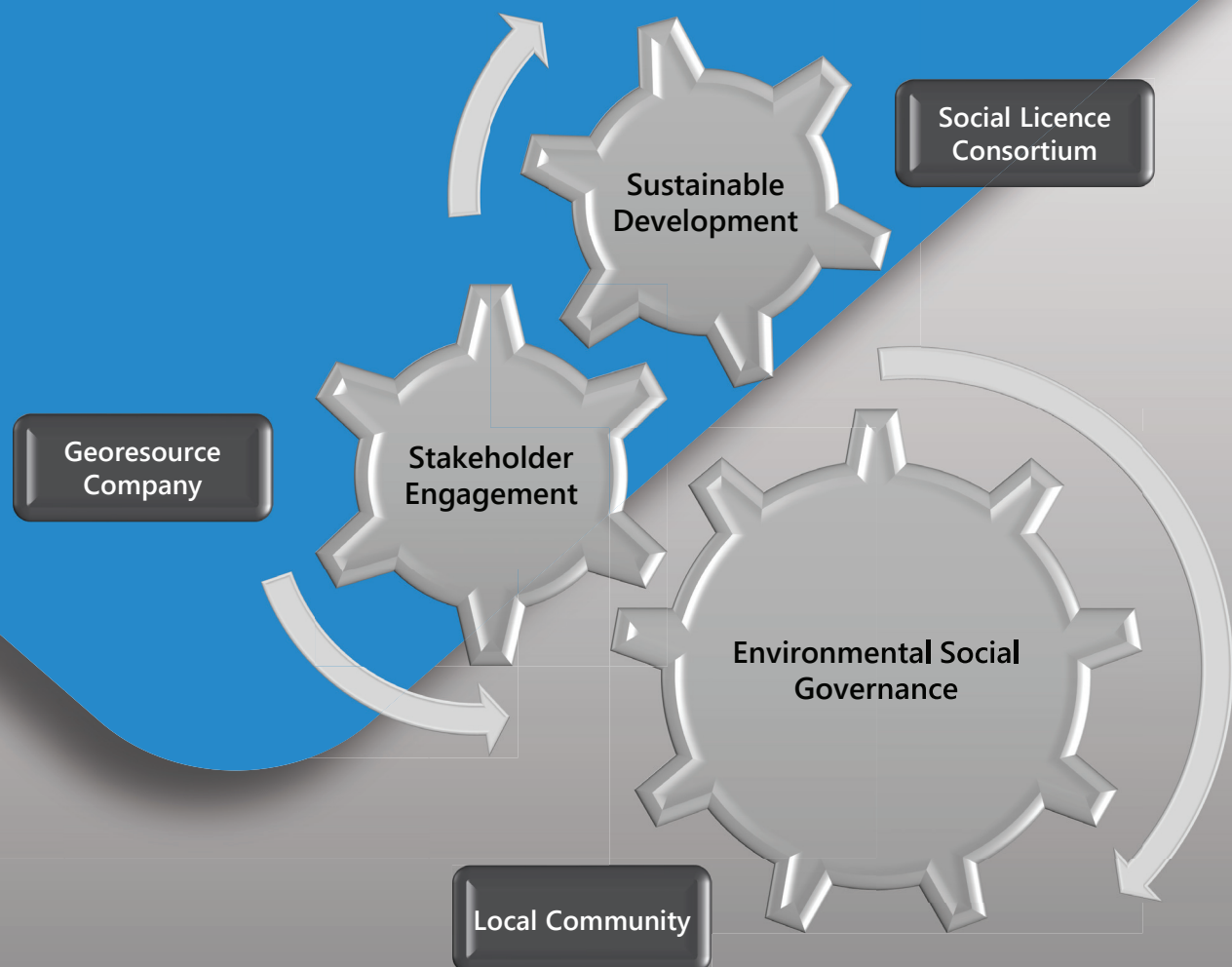
We deliver Borehole Imaging services to major mining companies across Australia.

## Cased Hole Services

Our full range of cased hole wireline services is targeted at oil and gas companies, groundwater authorities and environmental protection agencies.

## Hydrogeology

As a leading provider of groundwater wireline services, our experienced team can assist with all elements of groundwater planning and evaluation services.



# Disaster Mitigation & Alert Infrastructure, Communities & Ecosystems Safety

Through the acquisition of Prospect Environmental in October 2020, Qteq supplies products and services that focus on safeguarding communities and infrastructure from the impact of severe weather events.

Our Smart Sentinel systems, incorporating Qteq's range of intelligent sensors, are installed at locations prone to flooding and other natural disasters, and are designed to deliver critical situational awareness intelligence and alerts to vulnerable communities.

Since our first Smart Sentinel installation in 2013 in rural Queensland, uptake of these standalone smart systems has grown significantly, with our client base now including regional governments, councils, and authorities.

By also providing wireless mass notification solutions, we can forewarn and help protect local communities from hazards triggered by extreme weather events, and to minimize impacts on assets and ecosystems.

As a total solutions provider, we oversee the build, factory acceptance testing, site installation, commissioning and maintenance of these Sentinel systems. We also train client staff in the use of our cloud based data management platforms to visualize actionable intelligence, using intuitive configurable dashboards.

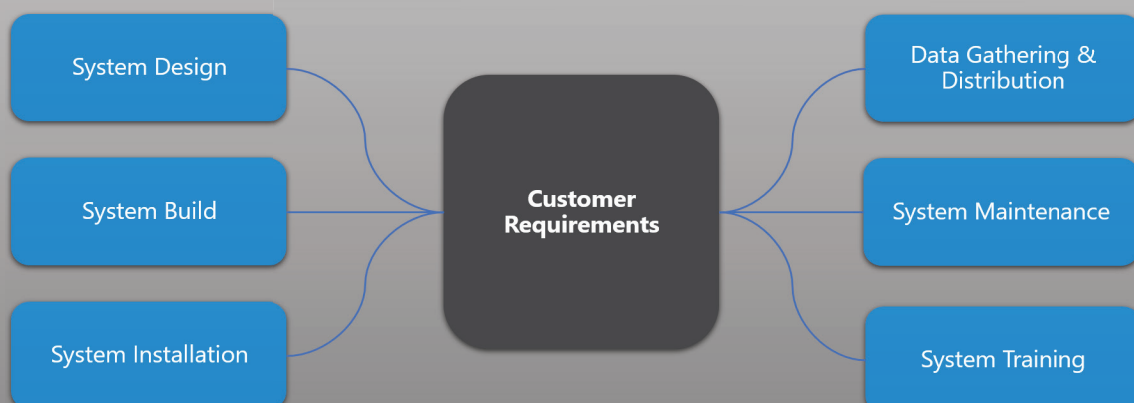


**Safeguarding  
Communities**

## PURPOSE-BUILT DISASTER MANAGEMENT SYSTEMS

### TO HELP SAFEGUARD:

- COMMUNITIES
- ASSETS
- ENVIRONMENT



## **Our disaster management systems are designed to suit customers' exacting specifications and requirements.**

Once system design and planned installation have been agreed upon, our highly skilled instrumentation and control engineers build the Sentinel systems in strict accordance to ISO 9001:2015 standards at our modern facility.

Qteq can provide certified and experienced engineers, hydrographers and technicians to support any network maintenance requirements. To ensure our customers can make full use of system functionality, we can provide vital training to ensure skilled staff can operate and monitor the system/s installed.

### **Data Management Platform**

Collection, centralisation and management of a wide assortment of sensor measurements, health diagnostics data and video streams.

### **Flood Early Warning Systems**

Acquisition of measurements from a range of Smart threat detection sensors and vision streaming systems.

### **Flooded Road Warning Networks**

Sentinel solutions to provide real-time data monitoring of water levels at flood prone crossings.

### **Mass Notification Solutions**

Cloud-based Central Control platforms processing measurements transmitted by networks of Qteq's threat detection and environmental monitoring Sentinels, providing emergency alerts.

### **Remote Camera Streams**

As a stand-alone Sentinel or in conjunction with other Smart sensors, our Remote Camera Streams provide vital actionable information to stakeholders and the general public.

### **Remote Monitoring Stations**

Customised solutions which can integrate a broad range of Smart sensors with a variety of wireless telemetry techniques to acquire, record and transmit measurements and system health diagnostics data direct to point of use.

### **Smart Inundation Gauge (SmlG)**

Real-time hydrographic data analysis, using cloud-hosted advanced data analytics software used to broadcast early warning alerts to the public through mass notification solutions.





# QTEQ PTY LTD

---

**[www.qteq.com](http://www.qteq.com)**

**Registered Office (QHQ)**

**Brisbane**

Suite 4, Level 3, 340 Adelaide Street  
Brisbane, QLD 4000, Australia  
T +61 (0)7 3834 9100

[sales@qteq.com](mailto:sales@qteq.com)  
[info@qteq.com](mailto:info@qteq.com)  
[careers@qteq.com](mailto:careers@qteq.com)

**Linked in**

**Qteq**

## QTEQ AUSTRALIA OPERATIONS:

**Centre of Excellence (CoE)**

**Toowoomba**  
179 Stephen Street  
Harristown, QLD 4350  
T +61 (0)7 4659 0537

**Centre of Excellence**

**Brisbane**  
Unit 4, 29 Armada Place  
Banyo, QLD 4014  
T +61 (0)7 3004 7000

**Office**

**Townsville**  
Unit 16, 62 Keane Street  
Currajong, QLD 4812  
+61 (0)7 3004 7016

## EXCLUSIVE PARTNERSHIPS:



**Geo Pressure Systems**  
Downhole electronic gauges

**MEASURE | MONITOR | MANAGE | MITIGATE**